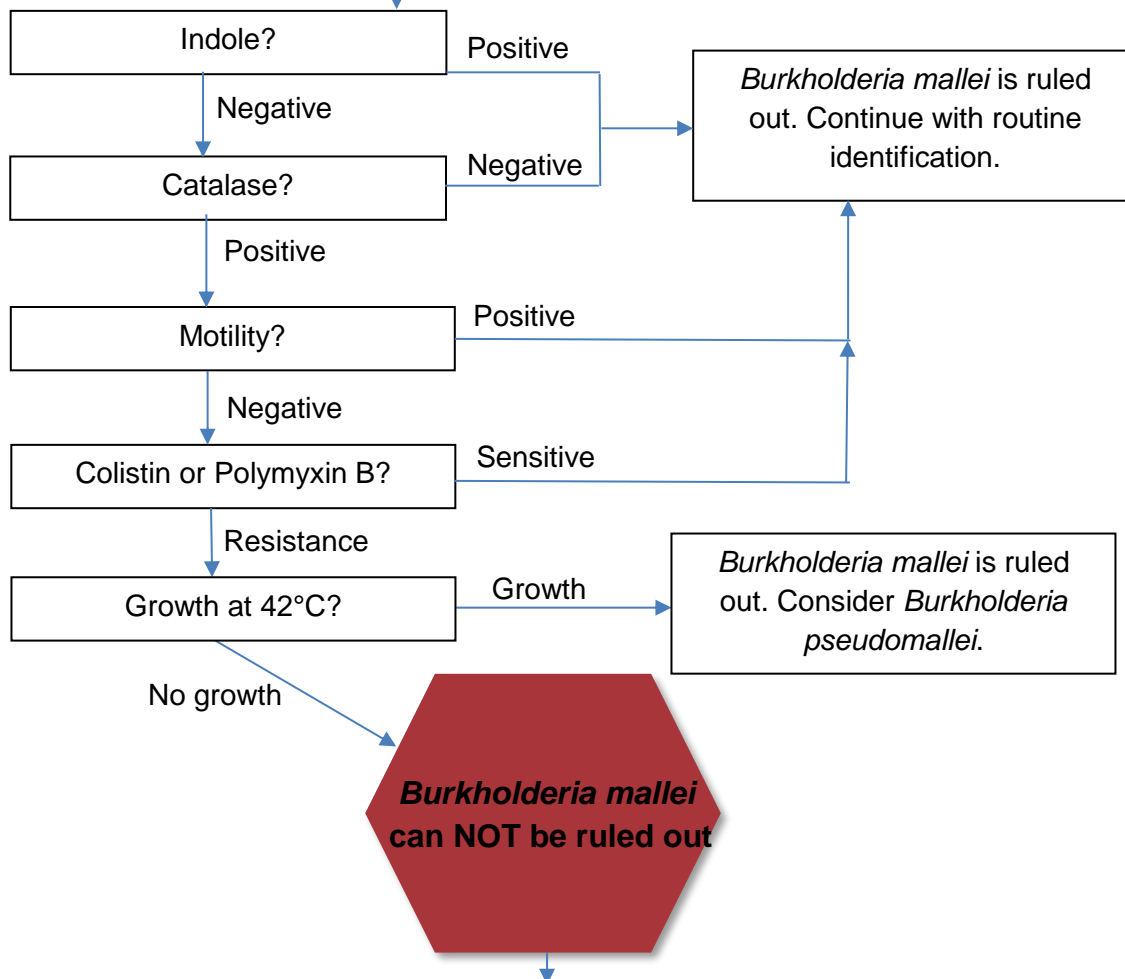
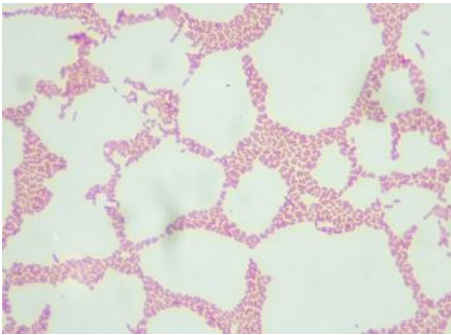


Burkholderia mallei

Major Characteristics of *Burkholderia mallei*

Gram stain Morphology: Gram-negative coccobacillus or small rod
Colony Morphology: Poorly growing colonies after 24 hours incubation. At 48 hours better growth of gray, translucent colonies without pigment or hemolysis;
 Poor or no growth on MAC in 48 hours



Call the North Dakota Department of Health and send the suspected agent
Report: Possible *Burkholderia mallei* submitted to NDPHL for confirmatory testing