

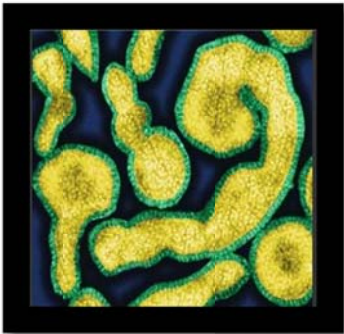
**AT A GLANCE**

- 1 ND has **15** reported cases of laboratory identified influenza.
- 2 There has been **1** reported influenza hospitalizations.
- 3 There have been **0** reported influenza deaths.

**Influenza Surveillance Project\***

Respiratory Viruses Identified		
Weeks	48-49	31-49
No. tested	0	11
Inf A 2009H1	0	0
Inf A H1	0	0
Inf A H3	0	0
Inf B	0	0
RSV	0	0
Parainfluenza	0	0
Rhinovirus	0	3
Adenovirus	0	1
Human Meta-pneumovirus	0	0

\*Surveillance is conducted at select North Dakota facilities to monitor influenza-like illness, acute respiratory disease and evaluate other respiratory virus pathogens that contribute to influenza-like illness.



# 2010-11 Influenza Summary

## Reported Influenza Cases\*

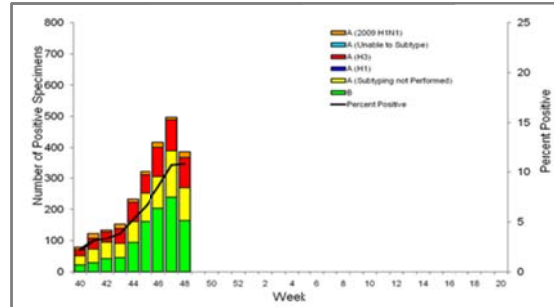


Week	Type A 2009 H1N1	Type A H1	Type A H3	Type A Unspecified	Type B	Unknown	Total
46	0	0	0	0	0	0	0
47	0	0	0	2	0	0	2
48	0	0	2	0	0	0	2
49	0	0	1	3	0	0	4
<b>YTD</b>	<b>0</b>	<b>0</b>	<b>3</b>	<b>12</b>	<b>0</b>	<b>0</b>	<b>15</b>

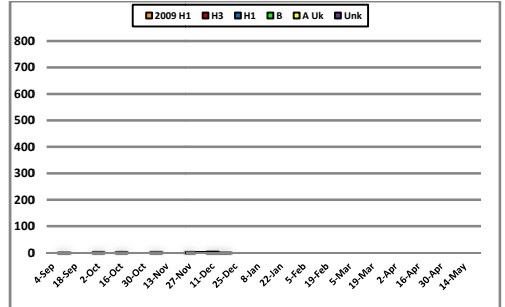
\*Includes positive rapid, IFA, DFA, PCR tests and Culture

## Influenza by Subtype

### United States



### North Dakota

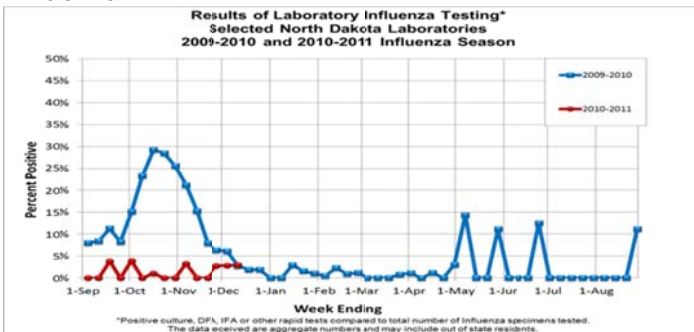


## Influenza by Age Group

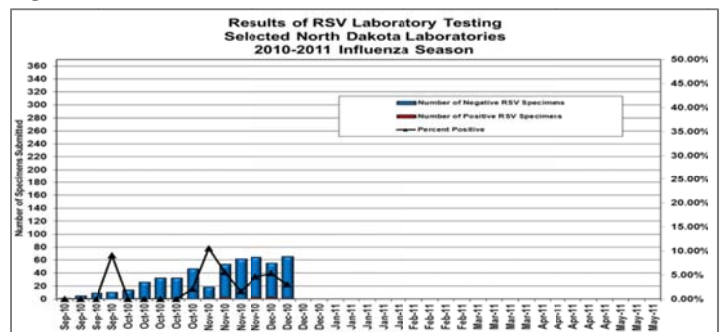
Week	<1	1-5	6-10	11-19	20-24	25-34	35-44	45-54	55-64	65+
46	0	0	0	0	0	0	0	0	0	0
47	1	0	0	0	0	1	0	0	0	0
48	0	1	0	1	0	0	0	0	0	0
49	1	0	1	1	0	0	1	0	0	0
<b>YTD</b>	<b>4</b>	<b>2</b>	<b>2</b>	<b>2</b>	<b>0</b>	<b>1</b>	<b>3</b>	<b>0</b>	<b>1</b>	<b>0</b>

## Sentinel Laboratory Influenza & RSV Testing

### Influenza



### RSV



## ILI Sentinel Provider Surveillance

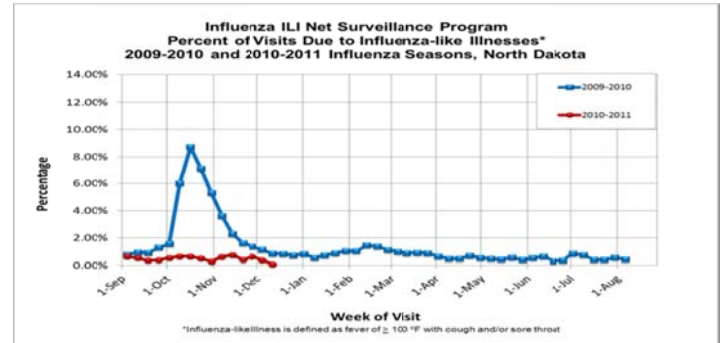
Select ND providers participate in the ILINet surveillance program.

Week	Percent Influenza-Like Illness (ILI)*	Number of Reported ILI				
		0-4	5-24	25-49	50-64	65+
46	0.43%	0	1	2	0	0
47	0.66%	4	1	1	0	0
48	0.07%	0	1	0	0	0
49	0.06%	0	1	0	0	0

\*Influenza-like illness is defined as fever  $\geq 100^{\circ}\text{F}$  with cough and/or sore throat.

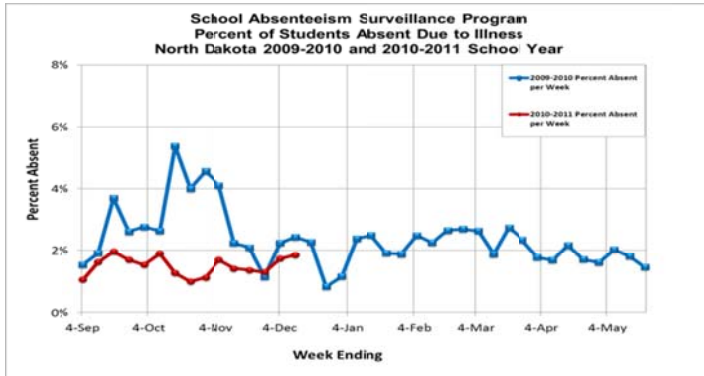
Nation-wide: 1.5% of patient visits reported via ILINet were ILI.

## North Dakota

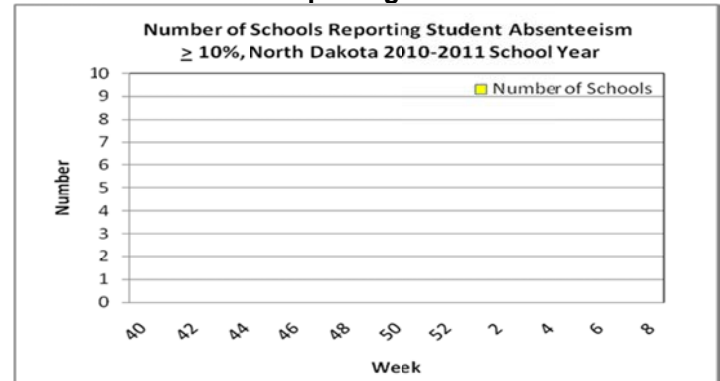


## School Absenteeism Surveillance

### Percent of Students Absent Due to Illness

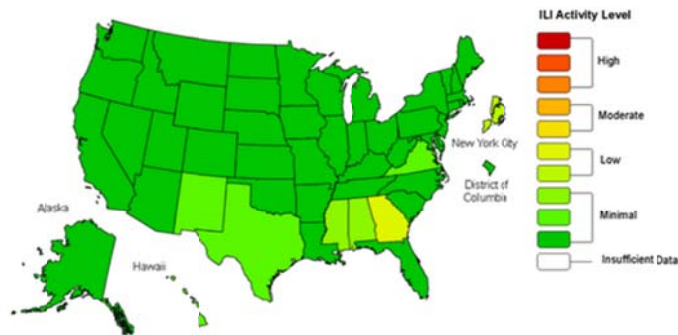


### Number of Schools Reporting Absenteeism >10%



## National Influenza Activity

**Influenza-Like Illness (ILI) Activity Level Indicator Determined by Data Reported to ILINet**  
2010-11 Influenza Season Week 48 ending Dec 04, 2010



### Please note:

This map uses the proportion of outpatient visits to health care providers for influenza-like illness to measure the ILI activity level within a state. It does not, however, measure the extent of geographic spread of flu within a state. Therefore, outbreaks occurring in a single city could cause the state to display high activity levels. Data collected in ILINet may disproportionately represent certain populations within a state, and therefore, may not accurately depict the full picture of influenza activity for the whole state.

**A Weekly Influenza Surveillance Report Prepared by the Influenza Division**  
Weekly Influenza Activity Estimates Reported by State and Territorial Epidemiologists\*  
Week Ending December 04, 2010- Week 48



### Please note:

This map indicates geographic spread and does not measure the severity of influenza activity.